

CAUTION

Read all safety instructions carefully. Failure to comply with the following safety instructions can cause electric shock, fire and/or serious injury.

ELECTRICAL SAFETY

All fittings must be installed in accordance with the current edition of the IEE Wiring regulations (BS7671: Requirements for Electrical Installations), Part P of the Building Regulations and appropriate statutory regulations.

If in any doubt, consult a qualified electrician.

Before commencing any work ensure the supply is switched off at the mains. Either by switching off main switch at the consumer unit or by removing the appropriate fuse.

As from April 2004 twin and earth wiring colours changed;

EARTH Green/Yellow sleeving
LIVE Brown replaces Red
NEUTRAL Blue replaces Black

To prevent a fire hazard always use the cable of the correct rating, size and type for the application.

Ensure all terminal screws are tight and all wires are neatly routed and not unduly stretched or pinched.

All earth connections must be made and continuity maintained.

Where any earth conductor is a bare wire, it must be sleeved with green/yellow sleeving.

If connecting to a switch, the switched live conductor must be appropriately identified.

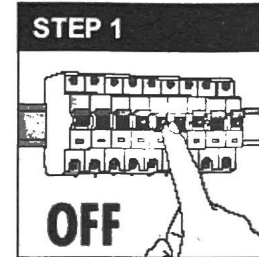
If drilling new fixing holes, be sure to locate cables before beginning work, to avoid electric shock and damage to the existing circuit.

GENERAL SAFETY

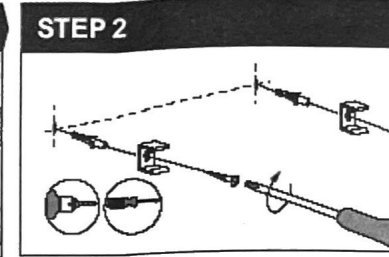
When working at heights, make sure you are using the correct equipment and follow all safety instructions.

Make sure that your workplace is tidy, clear from debris, well lit and dry.

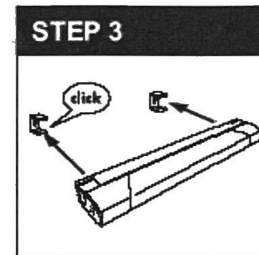
INSTALLATION INSTRUCTIONS



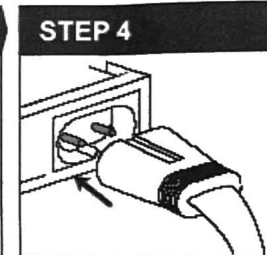
Switch off the power supply at the consumer unit or fuse box.



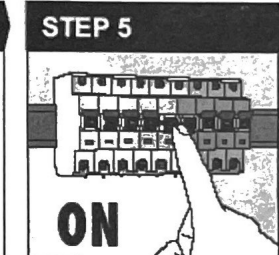
Mark, drill and fix holding clips.



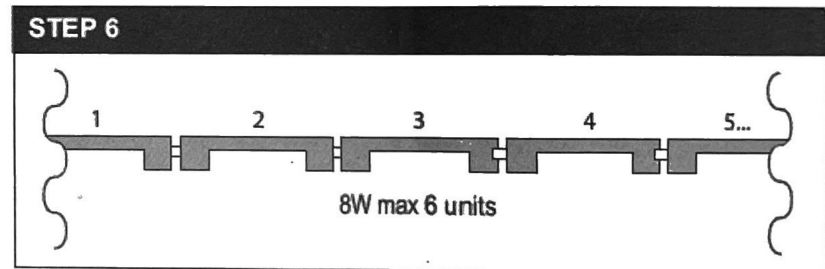
Attach light unit to holding clips.



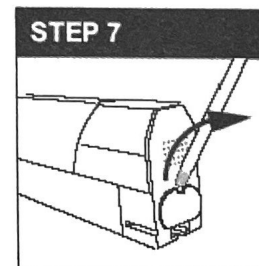
Connect to lighting circuit or 3A fused spur and then plug in power lead.



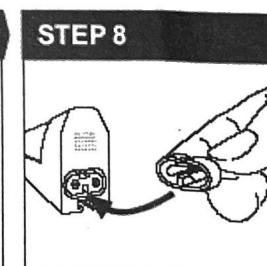
Switch on the power supply.



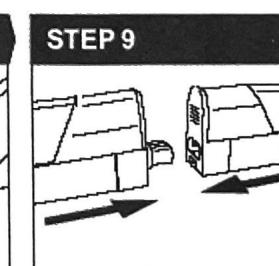
Up to 6 light units can be connected together.



Remove side power connector cover.



Insert power connector.



Connect light units together in line.